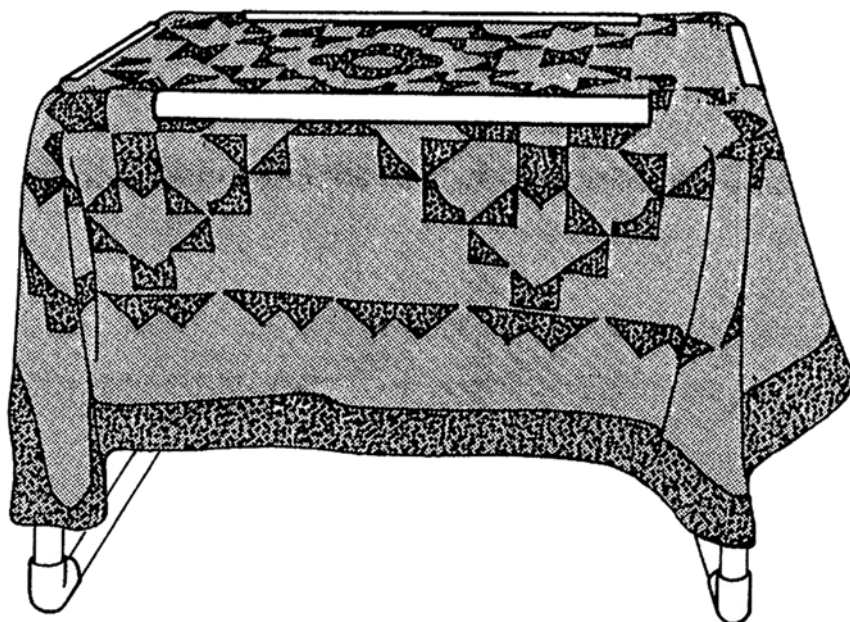




# Floor Model Needlework Frame

## The Lightweight Baste It, Quilt It, Tie It Frame!

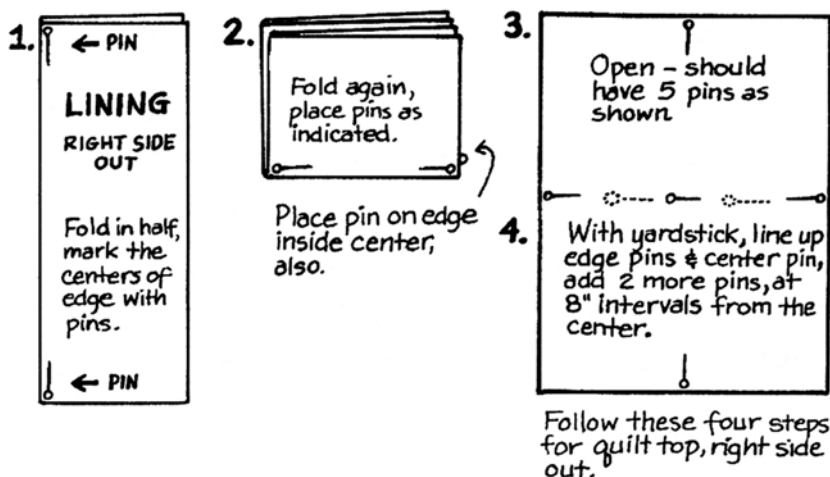
Item 7785



### BASTING ON YOUR Q-SNAP

Tack, pin, or stitch basting methods can be used. Be sure to remove pins that would be located directly under the Q-Snap clamps. The clamps will not fit over pins, and attempts to do so may result in damage to your quilt, frame, or fingers. Follow diagrams below to 'pin mark' lining, then your project is ready to quilt.

When marked, lay lining Pin Side Down over frame. Unroll batt, refold into halves and then into quarters. Match center of batt with center pin on lining. Smooth and unfold batt. Lay quilt over batt, right side up matching by feel, pins at center points, then at the 8" points. Snap clamps over layers onto frame tubes. Baste exposed area. When repositioning, your last baste stitches should be exposed to continue basting uniformly.



### QUILTING ON YOUR Q-SNAP

Assembly instructions for your Q-Snap frame are shown on the reverse side of this sheet. Remove the 4 clamps from the frame. Lay the *fully basted* quilt over the frame and snap on the clamps. Avoid the corner connectors when snapping the clamps over the quilt onto the tubes. Clamps fit snugly to insure consistent tension while you quilt. Be rotating the clamps on the tubes you can adjust the tension. Placement of the clamps will become easier after you do it a few times.

Adding a 2" border or extra material to top, batt, and lining will allow clamping and quilting to edges.

This is not a toy! Do let children play with your Floor Model Needlework Frame. This frame is not designed for climbing or to support loads. Save the box for storage.

## Yarn Tree

117 Alexander Avenue, Ames, IA 50010  
yarnree.com info@yarnree.com  
515-232-3121 800-247-3952

The original tube and clamp frame.  
Ask for it by name



Made In the USA

# Assembly Instructions - It's Easy! No Tools Needed!

## Before you begin...

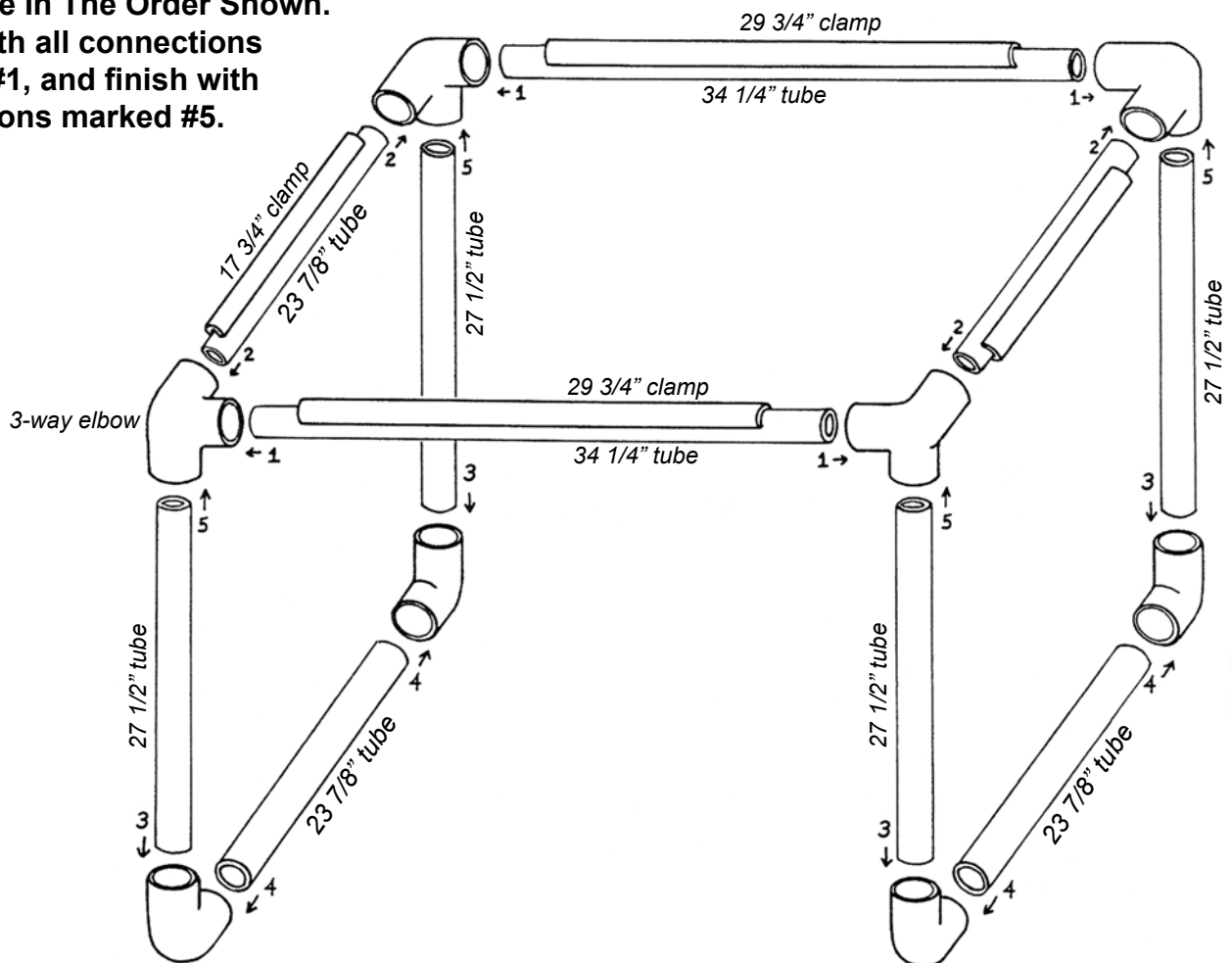
Wash your frame before you put a quilt into it. Handling, shipping, and static can make it a bit dusty. A light once-over with a damp cloth and you are ready to quilt. Use only mild dish or hand soap to clean the frame and clamps. NEVER use petroleum based cleaners, solvents, or polish as these can damage the plastic. Extended exposure to direct sunlight will weaken all plastics and cause chalking and premature failure of the clamps.

## Parts Included:

2	0801	17 3/4" Q-Snap clamps
2	0802	29 3/4" Q-Snap clamps
2	0809	34 1/4" tubes
4	0810	27 1/2" tubes
4	0811	23 7/8" tubes
4	0820	3-way elbows
4	0821	Elbows
1	0844	Handle for storage box
1		Instructions

**Call 800-247-3952 if any parts are missing or damaged**

**Assemble In The Order Shown.**  
**Begin with all connections marked #1, and finish with connections marked #5.**



This frame is designed for use with regular batting. "Fat Batts" are too thick for the clamps. Any trapunto work should be done after quilting. The clamps fit snugly and are not designed to fit over stuffed work.

Let your quilt breathe. REMOVE THE CLAMPS WHEN NOT STITCHING.

To protect your fabric and stitching, you may wish to place a piece of light weight fabric between your quilt and the clamps

Your Q-Snap Floor Frame is warranted for two years (please keep your purchase receipt). We will replace any defective parts during the warranty period for no charge.

Replacement clamps may be available at your local retail store. All other replacement parts are available from the manufacturer. Call 800-247-3952 (515-232-3121 outside the USA) or email [info@yarntree.com](mailto:info@yarntree.com). More information can be found at [QSnap.com](http://QSnap.com).